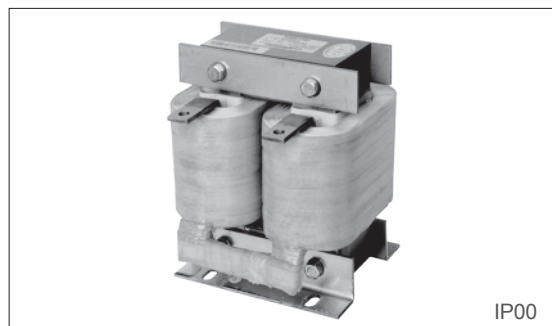


产品简述(Product Profile)

直流电路中能减少电流脉动，当电感量达到一定量时能保证电流连续不断流。改善电容滤波造成的输入电流波形畸变，减少和防止因冲击电流造成整流桥损坏和电容过热，提高功率因素，降低直流母线交流脉冲，限制电网电压的瞬变。

DC Reactors are designed to: reduce the current ripple in DC circuit, ensuring continuous current; when inductance value reach to a certain degree; reduce and prevent the rectifier bridge from the damage and overheating caused by pulse current; mprove power factor; reduce the AC pulse to the DC busbar; limit grid voltage transience.



产品特点(Product Features)

电抗器高性能，高耐温的符合绝缘材料配合无骨架工艺，电抗器耐热等级高，F级和H级可选。电抗器采用氩弧焊焊接工艺，噪音低，漏磁小，电感稳定。线圈采用箔绕工艺，耐电磁力强，工艺整洁，外观漂亮。铁心采用优质低损耗冷轧硅钢片，使电抗器可靠性高，体积小，重量轻，价格便宜。

Due to the composite insulation material of high performance & high temperature resistance and frameless process, the reactors' temperature heat-resisting ability is strong and the class F&H are optional. The process of the argon arc welding adopted by our company makes the reactors characterized by low noise, small magnetic flux leakage and stable inductance. Coiled with foil winding process, the reactors have strong resistance to electric magnetic force, and neat appearance. With the core made of grain-oriented cold-rolled silicon steel sheets, our reactors boast the advantages of high reliability, small size, light weight and low cost.

产品参数(Product Parameters)

1. 额定工作电压：DC500V-DC1000V
2. 抗电强度：铁芯-绕组3000VAC/50Hz/5mA，10S无飞弧击穿
3. 绝缘电阻：铁芯-绕组1000VDC，绝缘阻值 $\geq 100M\Omega$ ，
4. 电抗器噪音：小于65dB(与电抗器水平距离点1米测试)；
5. 产品执行标准：GB19212.1-2008
GB19212.21-2007
GB1094.6-2011

1. Rated operating power: DC500V-DC1000V
2. Reactive strength: cored-winding 3000VAC/50Hz/5mA/10S free of arcing breakage
3. Insulation resistance: cored-winding 1000VDC, insulation resistance value $\geq 100M\Omega$
4. Reactor's noise is less than 65dB (to be measured at the point 1 meter away from the reactor horizontally)
5. Standards of the product conform to:
GB19212.1-2008/GB19212.21-2007/GB1094.6-2011

直流电抗器 DC Reactor

直流电抗器选型表 (DC Reactor Selection)

序号 No.	功率 Power (KVA)	电压 Voltage (V)	额定 电流 Rated current (A)	电感 值 Inductance value (mH)	绝缘 等级 Insulation class	电抗型号 Reactor type	图号 Picture No.	产品规格 Product specifications								
								D*H*W (mm)	D1*W1 (mm)	a*b (mm)	φc c(mm)	A*e (mm)	材质 Material	重量 Weight (kg)	包装 数量 QTY	包装代码 Package code
1	1.5/2.2	400	6	11	F	DCL-0006-EIDC-E11M	A	80*110*85	63*60	5.4*9	/	/	Cu	2.3	2	A1
2	3.7/4.0	400	12	6.3	F	DCL-0012-EIDC-E6M3		100*125*100	80*70	6*11	/	/	Cu	3.2	2	A1
3	5.5/7.5	400	23	3.6	F	DCL-0023-EIDH-E3M6		110*135*120	87*70	6*11	/	/	AL	3.8	2	A2
4	11.0/15.0	400	33	2	F	DCL-0033-EIDH-E2M0		110*135*120	87*70	6*11	/	/	AL	4.3	2	A2
5	18.5	400	40	1.3	F	DCL-0040-EIDH-E1M3		110*135*120	87*70	6*11	/	/	AL	4.3	2	A2
6	22	400	50	1.08	F	DCL-0050-EIDH-E1M1		120*145*135	95*85	8.4*13	/	/	AL	5.5	2	B2
7	30	400	65	0.8	F	DCL-0065-EIDH-EM80		138*170*150	111*85	8.4*13	/	/	AL	7.2	2	B2
8	37	400	78	0.7	F	DCL-0078-EIDH-EM70		138*170*150	111*85	8.4*13	/	/	AL	7.5	2	B2
9	45	400	95	0.54	F	DCL-0095-EIDH-EM54		138*170*150	111*85	8.4*13	/	/	AL	7.8	2	B2
10	55	400	115	0.45	F	DCL-0115-EIDH-EM45		155*195*160	125*90	9*18	/	/	AL	9.2	2	C3
11	75	400	160	0.36	F	DCL-0160-UIDH-EM36	B	165*215*130	100*98	9*18	/	20*5	AL	10	1	C3
12	90	400	180	0.33	F	DCL-0180-UIDH-EM33		165*215*130	100*98	9*18	/	20*5	AL	20	1	C3
13	110/132	400	250	0.26	F	DCL-0250-UIDH-EM26		210*255*150	176*115	11*18	12	30*5	AL	23	1	D3
14	160	400	340	0.17	F	DCL-0340-UIDH-EM17		210*255*150	176*115	11*18	12	30*5	AL	23	1	D3
15	185/220	400	460	0.09	F	DCL-0460-UIDH-EM09		220*280*150	191*115	11*18	14	35*6	AL	28	1	D5
16	300	400	650	0.072	F	DCL-0650-UIDH-E72U		235*280*160	206*125	11*18	14	45*6	AL	33	1	E4
17	55	690	95	1	F	DCL-0095-UIDA-E1M0	C	185*215*185	100*127	9*18	11	25*5	AL	15	1	D3
18	75	690	120	0.85	F	DCL-0120-UIDA-EM85		190*215*200	100*142	9*18	11	25*5	AL	18	1	D3
19	90	690	165	0.65	F	DCL-0165-UIDA-EM65		215*260*190	176*126	11*18	11	25*5	AL	18.5	1	E4
20	132	690	210	0.47	F	DCL-0210-UIDA-EM47		215*260*200	176*131	11*18	11	25*5	AL	20	1	E4
21	160	690	264	0.38	F	DCL-0264-UIDA-EM38		220*260*220	176*151	11*18	11	30*5	AL	26	1	E4

包装代码表, 请参考P58 (Please refer to P58 - package code table.)

产品尺寸图 (Product Size)

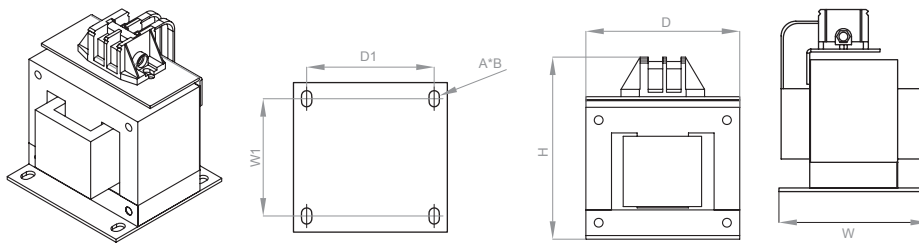


图 A Picture A

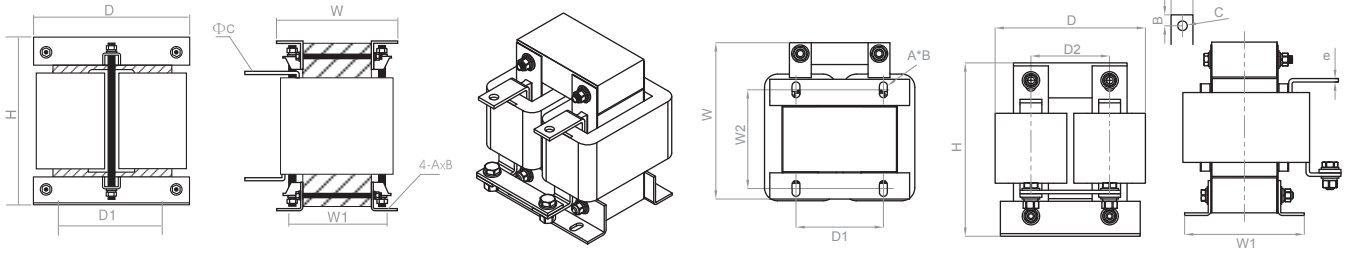


图 B Picture B

图 C Picture C

■ 包装代码对应一览表 (Package Code Table)

序号 No.	代号 Code	D	W	H	D _{max}	D _{min}	D _{max} -D _{min}	W _{max}	W _{min}	W _{max} -W _{min}	H _{max}	H _{min}	H _{max} -H _{min}	包装图 Package Outline
1	A1	220	330	300	110	80	30	200	168	32	168	168	20	
2	A2	220	360	300	110	110	0	240	240	0	240	240	0	
3	B1	220	330	300	130	125	5	168	168	0	168	168	0	
4	B2	220	430	335	138	120	18	300	270	30	270	270	25	
5	C2	220	360	315	155	155	0	240	168	72	168	168	10	
6	C3	255	430	380	165	155	10	320	130	190	130	130	20	
7	D3	300	290	420	210	185	25	200	150	50	150	150	40	
8	D4	290	420	325	200	200	0	310	232	78	232	232	35	
9	D5	310	390	445	220	195	25	280	150	130	150	150	150	
10	D6	285	430	330	195	195	0	320	280	40	280	280	15	
11	D7	285	460	375	195	155	40	350	155	195	155	155	60	
12	D8	285	510	420	195	195	0	400	195	205	195	195	95	
13	E2	340	265	365	250	250	0	175	175	0	175	175	0	
14	E3	340	325	395	250	250	0	235	180	55	180	180	60	
15	E4	325	310	435	235	215	20	220	160	60	160	160	20	
16	F2	345	310	410	255	250	5	220	175	45	175	175	25	
17	F3	340	340	465	250	250	0	250	240	10	240	240	50	
18	G1	390	280	460	300	300	0	190	190	0	190	190	0	
19	G2	390	300	480	300	300	0	210	210	0	210	210	20	
20	G3	390	370	430	300	290	10	280	190	90	190	190	80	
21	G4	390	370	395	300	300	0	280	280	0	280	280	25	
22	G5	380	340	455	290	250	40	250	200	50	200	200	20	
23	G6	340	310	445	250	250	0	220	220	0	220	220	0	
24	H3	410	445	485	320	320	0	355	215	140	215	215	40	
25	H4	410	430	530	320	315	5	340	245	95	245	245	75	
26	H5	410	430	585	320	320	0	340	340	0	340	340	0	
27	I1	415	305	515	325	325	0	215	215	0	215	215	0	
28	I2	450	545	560	360	325	35	455	235	220	235	235	135	
29	I3	450	440	515	360	320	40	350	270	80	270	270	115	
30	I4	450	475	565	360	330	30	385	340	45	340	340	150	
31	I5	420	515	615	330	320	10	425	340	85	340	340	175	
32	J2	485	385	475	395	395	0	295	295	0	295	295	0	
33	J3	485	480	525	395	370	25	390	270	120	270	270	20	
34	J4	485	465	560	395	365	30	375	320	55	320	320	20	
35	K1	510	440	465	420	420	0	350	350	0	350	350	0	
36	K2	515	560	520	425	400	25	470	365	105	365	365	15	
37	K3	510	430	555	420	420	0	340	340	0	340	340	0	
38	K4	490	430	605	400	400	0	340	340	0	340	340	40	
39	K5	520	560	645	430	405	25	470	350	120	350	350	10	
40	L1	570	440	553	480	480	0	350	350	0	350	350	0	
41	L2	570	430	643	480	480	0	340	340	0	340	340	0	
42	L3	610	460	638	520	520	0	370	370	0	370	370	0	
43	L4	575	525	703	485	485	0	435	435	0	435	435	0	
44	L5	545	570	673	455	455	0	480	480	0	480	480	0	
45	L6	590	600	738	500	340	160	510	340	170	340	340	115	
46	M2	640	470	703	550	550	0	380	340	40	340	340	0	
47	M3	635	555	713	545	545	0	465	465	0	465	465	0	
48	N2	680	605	773	590	550	40	515	420	95	420	420	45	
49	N3	640	620	823	550	550	0	530	530	0	530	530	25	
50	N4	690	620	883	600	600	0	530	530	0	530	530	0	