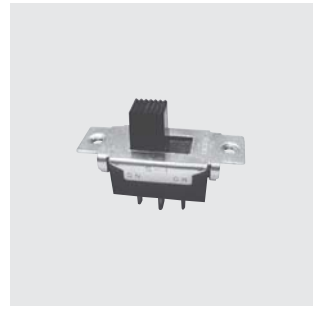


# S

## Miniature Slide Switches

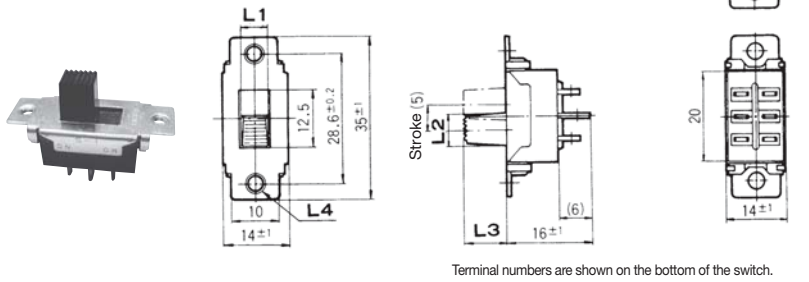
RoHS Compliant



### Part Numbering



**S-1-Z DPDT**  
**S-2-Z**  
**S-3-Z**  
**S-4-Z**



### Dimension L

Part No.	L1	L2	L3	L4
<b>S-1-Z</b>	6.2	7.4	9	M3×0.5
<b>S-2-Z</b>	5.7	7.1	16	M3×0.5
<b>S-3-Z</b>	6.2	7.4	9	φ3.5
<b>S-4-Z</b>	5.7	7.1	16	φ3.5

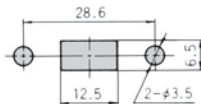
Part No.	Switching function	
	Viewed from part No. marking side	
<b>S-1-Z</b>		
<b>★S-2-Z</b>	ON	ON
<b>S-3-Z</b>	ON	ON
<b>★S-4-Z</b>	ON	ON
Connecting terminals	2-1 5-4	2-3 5-6

### Specifications

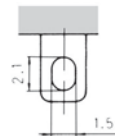
Rating	Initial contact resistance	Dielectric strength	Insulation resistance	Electrical life
<b>S-1~4</b>	AC125V 8A AC250V 4A 100mΩ Max. (DC2~4V 1A)	AC1500V 1 minute	100MΩ Min. (DC500V)	15,000 cycles

Note : Please refer to P.524 and P.634 for **UL**-recognized products.

### Panel Cut-Out Dimension



### Terminal style



### Handling Precautions (HSS,S,SS,ES)

#### 1.Soldering Specifications

- (1)Manual Soldering  
 Device : Soldering iron  
 350°C, Max.; 3 seconds, Max.

#### 2. Flux Cleaning

- (1)Solvent : Fluorine or Alcohol type.  
 (2)**HSS, SS, ES**, and **S** series are not process sealed. If the PC board is to be cleaned, clean the soldering surface of the substrate with a brush so that the switch is not exposed to the cleaning solution.